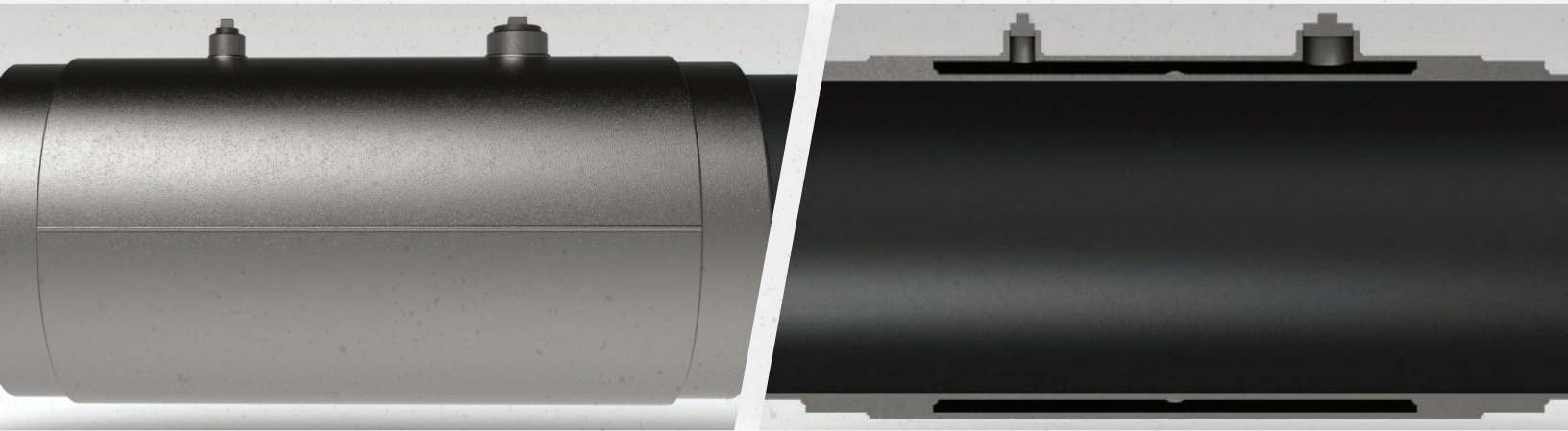


OFFSET SLEEVES

Allan Edwards offset sleeves are ideal when both diametrical clearance and Type B leak-sealing are required in a pipeline reinforcement. Offset sleeves fit over select wrinkle bends, girth welds and other low-profile pipe geometries. Riser rings are welded to the pipe to achieve the desired diametrical clearance. Oversized steel half sole sleeves are then welded to the risers, forming an annulus. The offset sleeve's annulus may be filled with a pourable epoxy grout that creates a near-perfect fit-up to the carrier pipe. Once cured, the epoxy serves to transfer the load to the outer steel sleeves. Pressure-containing welds are applied to the threaded bosssets once filling is complete.



Key Features:

- Custom-built to exact customer-supplied specifications
- Threaded bosssets allow for venting
- Bosssets can accommodate pumping/pouring grout
- Annulus space may be left empty or filled with desired grout
- ITW Performance Polymers Chockfast Grey epoxy is recommended:
 - Pourable epoxy grout
 - Fills annulus with minimal shrinkage
 - High compressive modulus
 - Manufacturer-supplied glass transition temperature of 212 °F



For more demanding applications, ITW Performance Polymers Chockfast Orange is considered the premium product offering, providing even less shrinkage and a glass transition temperature of 255 °F.



6468 N Yale Ave. Tulsa, OK 74117 // allanedwards.com // 918.583.7184