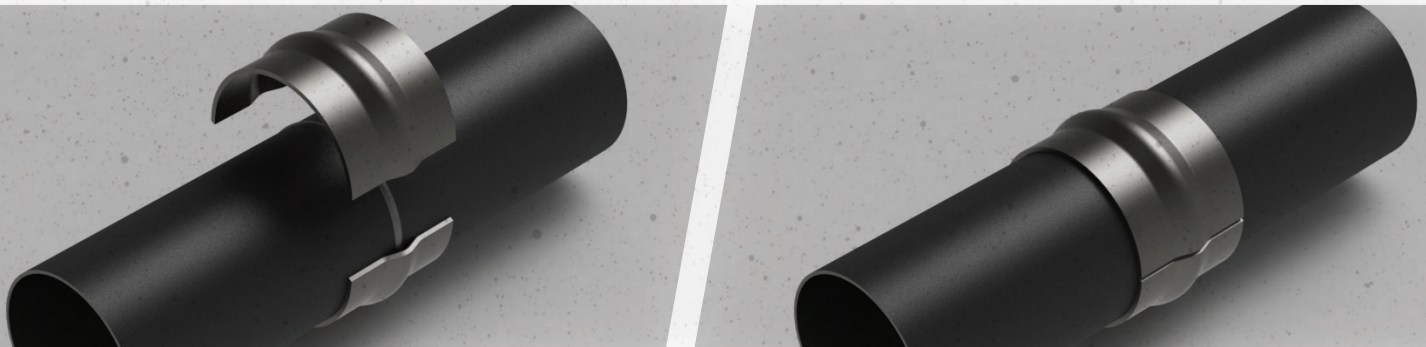


# GIRTH WELD SLEEVES

Allan Edwards offers specialized girth weld sleeves to reinforce welded pipe joints. These sleeves are manufactured with special dies to create two 180° halves that encircle the pipe. Girth weld sleeves are formed from ASTM-grade structural & pressure vessel-quality steel plate. The I.D. of each sleeve is designed to match O.D. of the pipe. Sleeves are manufactured to provide sufficient clearance for existing welds. The included table provides information concerning nominal pipe sizes, weights and dimensions. *For additional details, please contact Allan Edwards.*

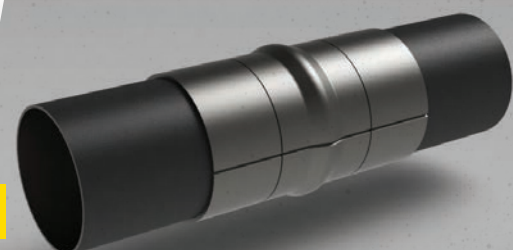
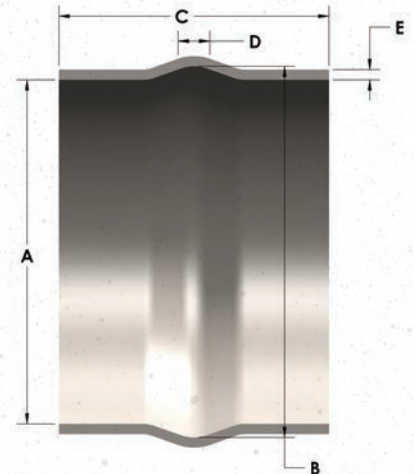


## Girth Weld Sleeve Dimensions

NOMINAL PIPE SIZE (INCHES)	A	B	C	D	E	WEIGHT PER SET (LBS.)
2	2 3/8	3 1/2	4	3/8	3/16	2
3	3 1/2	4 1/2	5	3/8	1/4	5
4	4 1/2	6 1/4	6	3/8	1/4	7
6	6 5/8	8	12	1/2	1/4	19
8	8 5/8	10	12	1/2	3/8	37
10	10 3/4	12	12	1/2	3/8	45
12	12 3/4	13 3/4	12	1/2	3/8	53
14	14	15 3/4	12	1/2	3/8	57
16	16	17 3/4	12	1/2	3/8	65
18	18	20	12	1/2	3/8	73
20	20	22	12	5/8	3/8	83
22	22	23 1/2	12	5/8	3/8	95
24	24	25 1/2	12	1	3/8	103
26	26	27 1/2	12	5/8	3/8	112
30	30	31 1/2	12	3/4	3/8	128
36	36	37 1/2	12	3/4	3/8	146
36	36	37 1/2	12	3/4	1/2	195
42	42	43 1/2	12	3/4	3/8	170
42	42	43 1/2	12	3/4	1/2	226
48	48	49 1/2	12	3/4	3/8	265
48	48	49 1/2	12	3/4	1/2	353

### Key:

- **A** = Sleeve Inner Diameter
- **B** = Girth Weld Diameter Clearance
- **C** = Axial Sleeve Length
- **D** = Girth Weld Axial Clearance
- **E** = Sleeve Wall Thickness



\*Custom lengths available upon request.

**Half sole extension sleeves available upon request.**



6468 N Yale Ave. Tulsa, OK 74117 // [allanedwards.com](http://allanedwards.com) // 918.583.7184

